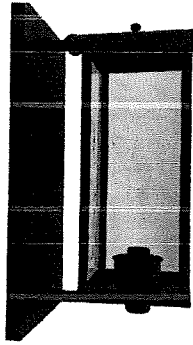
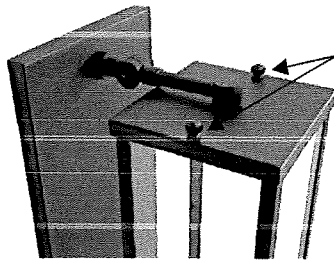


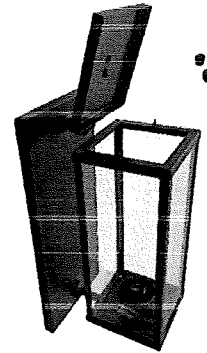
Instructions for Replacing Bulb



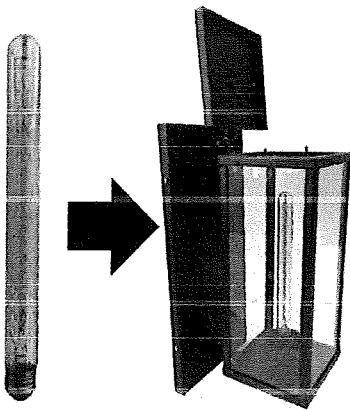
After mounting the Lamp securely to the Wall.



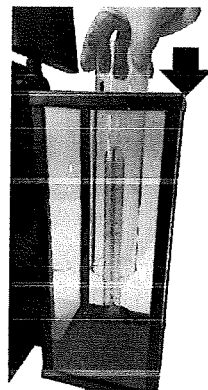
Step 1 – Unscrew and remove the 2 top knobs from the top lid.



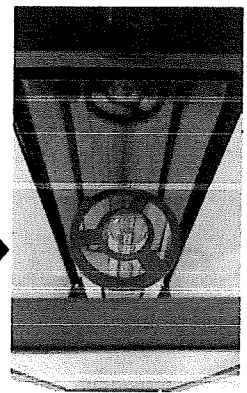
Step 2 – Carefully open the Top Lid.



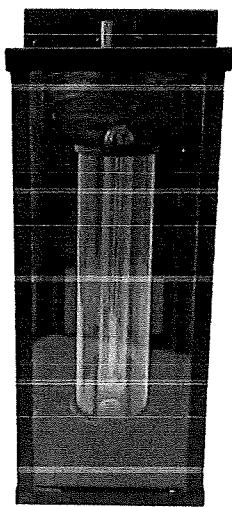
Step 3 – Insert bulb into the socket. Turn it clockwise until it locks into place or keep gently twisting clockwise until it won't go any further.



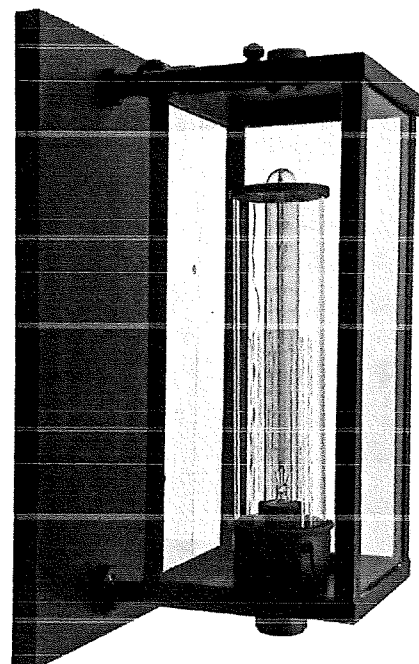
Step 4 – Carefully place and insert the Glass Tube over the bulb and positioned upright into the bottom cup.



Step 5 – Place the loose metal ring provided over the lip of the glass tube, which will keep the tube straight.



Step 6 – Close the Top Lid and screw back the 2 top knobs ensuring that the lid is properly flushed with the frame.



Assembly is complete.